

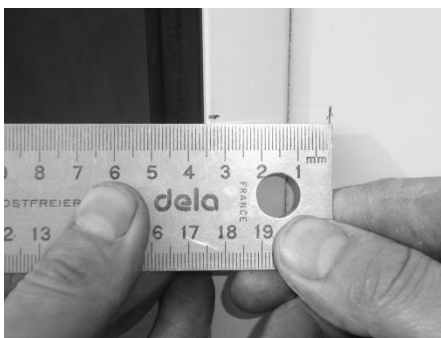
# Fitting instructions for compartment and driver door lock



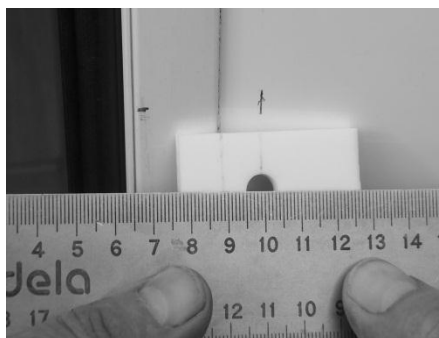
1 – Measure dimension A (in this case 50 mm)



2 – Transfer dimension A which you have measured from the outside



3 – Check minimum dimensions of 5 and 22 mm (in this case 12 and 36 mm = OK)



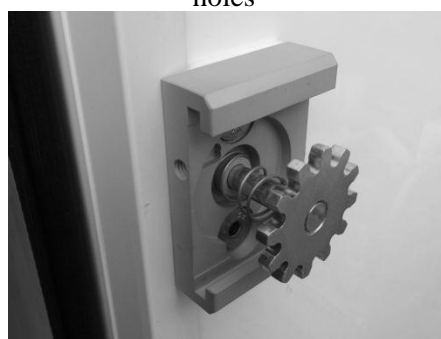
4 – Cut Teflon block to the dimension previously determined (in this case 12 mm)



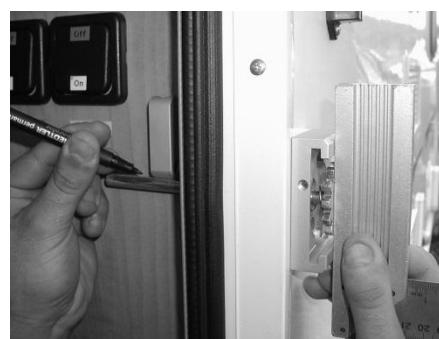
5 – Mark and drill 3 x Ø 9 mm holes



6 – Fit base



7 – Fit pinion and loose spring, permanently tighten screws



8 – Align pinion to the front, determine length of stem: this must not be too short



9 – Fit slider and lightly tighten M6 short screws



10 – Fit handle and secure firmly in position (top of lock open)